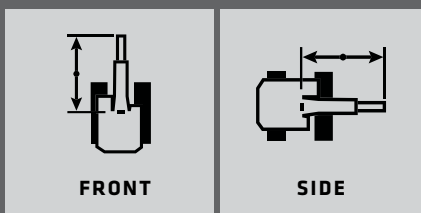
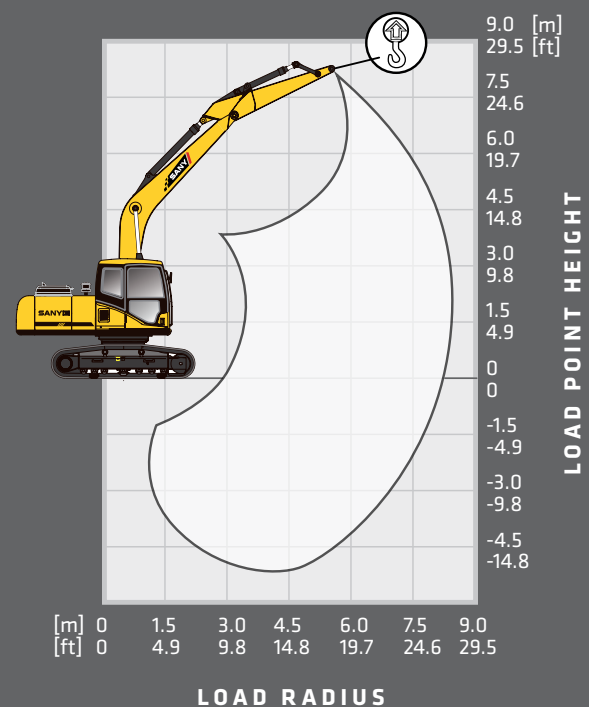


SY225C || LIFTING PERFORMANCE

Standard 5700 mm (18' 8") Boom
 Standard 2925 mm (9' 7") Arm
 Standard 800 mm (31") Track Shoes
 No Bucket



Ratings are based on ISO 10567:2007. Lift capacity does not exceed 75% of tipping load with the machine on firm, level ground or 87% of hydraulic lifting capacity.



LOAD RADIUS	1.5 m 4.9 ft		3.0 m 9.8 ft		4.5 m 14.8 ft		6.0 m 19.7 ft		7.5 m 24.6 ft		MAX REACH	
LOAD POINT HEIGHT	FRONT	SIDE	FRONT	SIDE	FRONT	SIDE	FRONT	SIDE	FRONT	SIDE	FRONT	SIDE
7.5 m 24.6 ft							4267 kg* 9,407 lb*	4267 kg* 9,407 lb*			4746 kg* 10,463 lb*	4746 kg* 10,463 lb*
6.0 m 19.7 ft							4617 kg* 10,179 lb*	4617 kg* 10,179 lb*			4816 kg* 10,617 lb*	4576 kg 10,088 lb
4.5 m 14.8 ft							5159 kg* 11,374 lb*	5159 kg* 11,374 lb*	4936 kg* 10,882 lb*	4325kg 9,535 lb	4959 kg* 10,933 lb*	3958 kg 8,726 lb
3.0 m 9.8 ft					7583 kg* 16,718 lb*	7583 kg* 16,718 lb*	6008 kg* 13,245 lb*	5766 kg 12,712 lb	5310 kg* 11,707 lb*	4222 kg 9,308 lb	5155 kg* 11,365 lb*	3958 kg 8726 lb
1.5 m 4.9 ft					9288 kg* 20,477 lb*	8122kg 17,906 lb	6893 kg* 15,196 lb*	5526 kg 12,183 lb	5763 kg* 12,705 lb*	4105 kg 9,050 lb	5275 kg 11,629 lb	3546 kg 7,818 lb
0 m 0 ft			6861 kg* 15,126 lb*	6861 kg* 15,126 lb*	10286 kg* 22,677 lb*	7846 kg 17,297 lb	7554 kg* 16,654 lb*	5338 kg 11,806 lb	6040 kg 13,316 lb	4016 kg 8,854 lb	5407 kg 11,920 lb	3616 kg 7,972 lb
-1.5 m -4.9 ft	6579 kg* 14,504 lb*	6579 kg* 14,504 lb*	10946 kg* 24,132 lb*	10946 kg* 24,132 lb*	10532 kg* 23,219 lb*	7763 kg 17,114 lb	7822 kg* 17,245 lb*	5280 kg 11,640 lb	6010 kg 13,250 lb	3989 kg 8,764 lb	5177 kg 11,413 lb	3907 kg 8,613 lb
-3.0 m -9.8 ft	10505 kg* 23,160 lb*	10505 kg 23,160 lb	14385 kg* 31,713 lb*	14385 kg* 31,713 lb*	10058 kg* 22,174 lb*	7819 kg 17,238 lb	7504 kg* 16,543 lb*	5313 kg 11,713 lb			6472 kg* 14,268 lb*	4592 kg 10,124 lb
-4.5 m -14.8 ft			11956 kg* 26,358 lb*	11956 kg* 26,358 lb*	8474 kg* 18,682 lb*	8032 kg 17,708 lb					6930 kg* 15,278 lb*	6399 kg 14,107 lb

* Indicates load limited by hydraulic lifting capacity

In the interest of continual equipment development, SANY America, Inc. reserves the right to change these specifications at any time without prior notification.

SY225C

PRODUCT SPECIFICATIONS

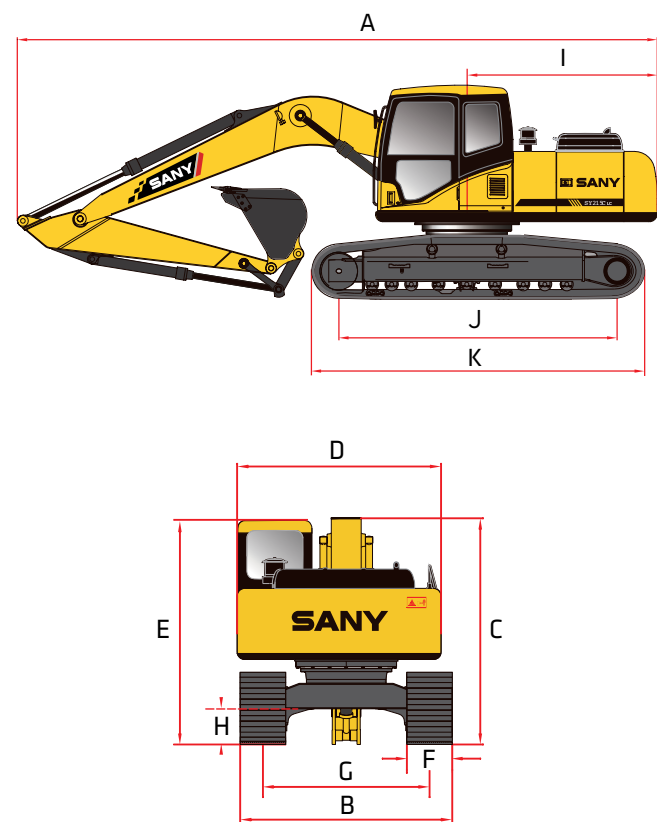


STANDARD FEATURES

- Powerful, robust and reliable powertrain and hydraulic components for long life in the most demanding applications
- Optimized positive flow control hydraulics improve operating efficiency by up to 5% and fuel efficiency by up to 10%

- ➔ **Gross Power**
122 kW / 163.6 hp
- ➔ **Dig Depth**
6600 mm / 21' 8"
- ➔ **Operating Weight**
24500 kg / 54,013 lb
- ➔ **Bucket Breakout**
127.0 kN / 28,551 lbf

DIMENSIONS



DIMENSIONS		
Boom Length	5700 mm	18' 8"
Stick (Arm) Length	2925 mm	9' 7"
A Transport Length	9728 mm	31' 11"
B Transport Width	3390 mm	11' 1"
C Transport Height	3370 mm	11' 1"
D Upper Structure Width	2710 mm	8' 11"
E Cab Height	3050 mm	10' 0"
F Track Width (standard shoe)	800 mm	31"
G Track Gauge	2590 mm	8' 6"
H Ground Clearance (minimum)	480 mm	19"
I Tail Swing Radius	2890 mm	9' 6"
J Track Length on Ground	3830 mm	12' 7"
K Track Length	4636 mm	15' 3"

Powerful, robust and reliable powertrain and hydraulic components

TECHNICAL SPECIFICATIONS

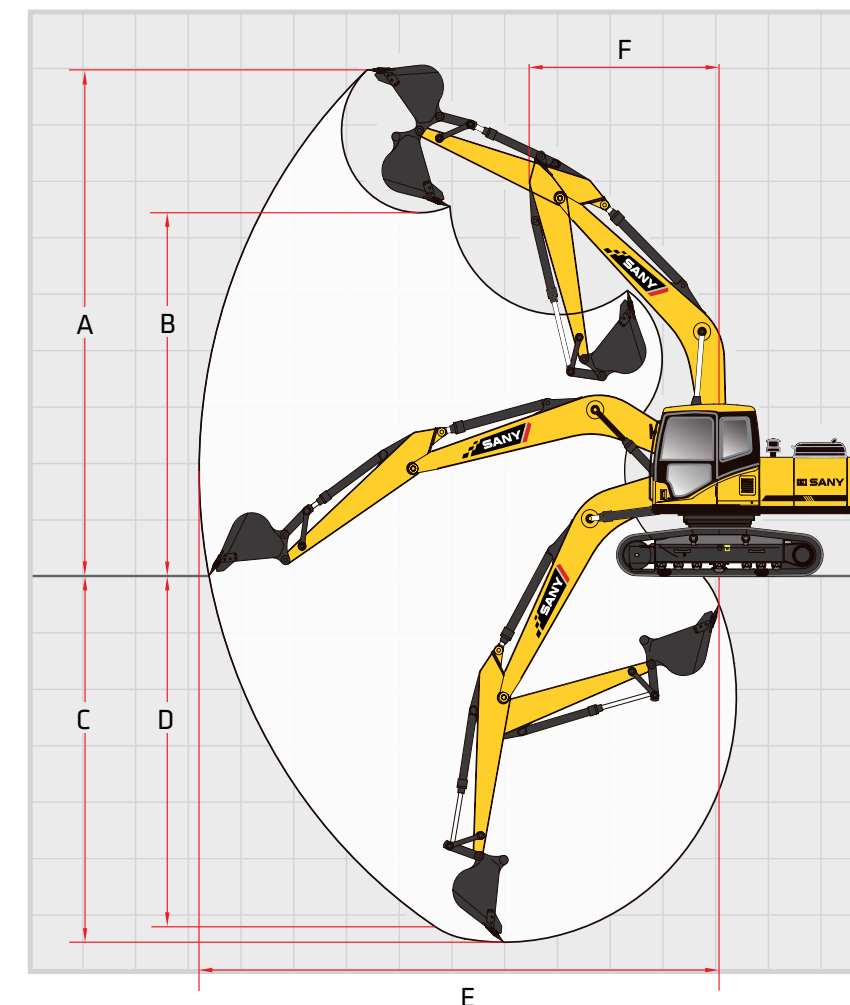
Operating Weight	24,500 kg	54,013 lb
Ground Pressure	36.1 kPa	5.2 psi
Engine	Cummins QSB6.7	
Displacement	6.7 L	408.9 in ³
Gross Power	122 kW	163.6 HP
Hydraulics	Positive Flow with Pilot Control	
Main Hydraulic Pump	Axial Piston - Variable Displacement	
Operating Flow (maximum)	444.0 L/min	117.3 gal/min
Operating Pressure (maximum)	34.3 MPa	4975 psi
Power Boost Pressure (maximum)	37.3 MPa	5410 psi
Auxiliary Flow (maximum)	400 L/min	105.7 gal/min
Auxiliary Pressure (maximum)	34.3 MPa	4975 psi
Travel Motor	Axial Piston with Park Brake	
Travel Pressure (maximum)	34.3 MPa	4975 psi
Travel Speeds (maximum)	3.3 / 5.1 km/hr	2.1 / 3.2 mph
Travel Effort (maximum)	180.0 kN	40,466 lbf
Grade Capability (maximum)	35°	
Swing Motor	Axial Piston with Swing Brake	
Swing Pressure (maximum)	28.0 MPa	3989 psi
Swing Speed (maximum)	10.9 RPM	
Undercarriage (standard)	Steel Track	
Track Shoe width (standard)	800 mm	31"
Track Rollers (per side)	9	
Carrier Rollers (per side)	2	

SERVICE REFILL CAPACITIES

Fuel Tank Capacity	340.0 L	89.5 gal
DEF Tank Capacity	19.0 L	5.0 gal
Hydraulic Tank Capacity	230.0 L	60.5 gal
Engine Oil Capacity	27.0 L	7.1 gal
Cooling System Capacity	27.6 L	7.3 gal

In the interest of continual equipment development, SANY America, Inc. reserves the right to change these specifications at any time without prior notification.

WORKING RANGE



WORKING RANGE

Boom Length	5700 mm	18' 8"
Stick (Arm) Length	2925 mm	9' 7"
A Maximum Digging Height	9180 mm	30' 1"
B Maximum Dumping Height	6670 mm	21' 11"
C Maximum Digging Depth	6600 mm	21' 8"
D Maximum Vertical Wall Digging Depth	5980 mm	19' 7"
E Maximum Reach at Ground Level	10307 mm	33' 10"
F Minimum Swing Radius	3730 mm	12' 3"

DIGGING PERFORMANCE

Boom Length	5700 mm	18' 8"
Stick (Arm) Length	2925 mm	9' 7"
Bucket Breakout Force (ISO)	127.0 kN	28,551 lbf
Stick (Arm) Digging Force (ISO)	103.0 kN	23,155 lbf

In the interest of continual equipment development, SANY America, Inc. reserves the right to change these specifications at any time without prior notification.